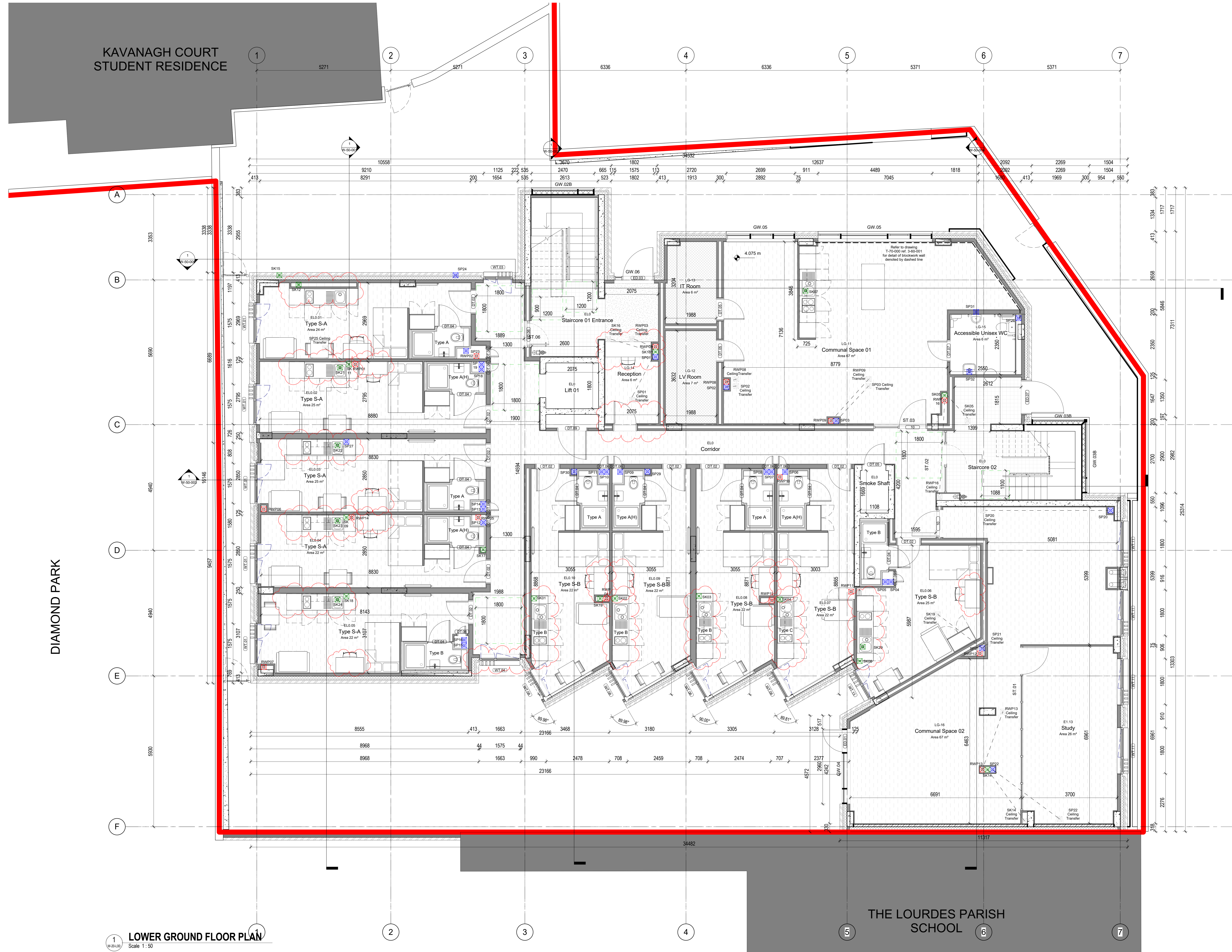


KAVANAGH COURT STUDENT RESIDENCE

5271



GENERAL NOTES

1. COPYRIGHT RESERVED
2. SHOWN SCALE DRAWING. USE FINISHED DIMENSIONS ONLY
3. ALL DIMENSIONS TO BE REPORTED TO ARCHITECT
4. THE CONTRACTOR IS RESPONSIBLE FOR CHECKING ALL LEVELS AND DIMENSIONS
5. ALL STRUCTURE TO BE TO STRUCTURAL ENGINEERS DETAILS
6. ALL MECH & ELEC SERVICES TO SERVICES ENGINEERS DETAILS
7. ALL PROJECTS MUST BE INSTALLED IN ACCORDANCE WITH MANUFACTURER'S INSTRUCTIONS
8. CONTRACTOR IS RESPONSIBLE FOR THE COORDINATION OF STRUCTURE, MECHANICAL & ELECTRICAL SERVICES

REV	DATE	DESCRIPTION	BY
1	28/01/19		RB
2	28/01/19	Studio Kitchens updated, desks removed, 1100mm shoe holders removed, reception screens removed	RB

- LEGEND**
- SSL +0.000 Structural Slab Level
  - FFL +0.000 Finished Floor Level
  - Fall Arrest System
  - 1400x900mm Wheelchair Refuge with associated refuge panel & alarm
  - Designated Clear Space to be clear of all door swings & fittings
  - 1800x1800mm Turning Circle to be clear of all door swings & fittings
  - Radon Sump & exhaust vent
  - External Window Reference Refer to W-70-101 for details
  - External Curtain Wall Reference Refer to W-70-101 for details
  - External Door Reference Refer to W-70-101 for details
  - Internal Door Reference Refer to W-70-101 for details
  - Internal Screen Reference Refer to W-70-101 for details
  - Flooring: IVC Design Floor Click System
  - Flooring: Terrazzo Composite by Archages 600 x 600 mm made to achieve R10 Slip Resistance Value

Drawings to be read in conjunction with the Clients Performance Specification (CPS) including Schedule A Room Data Sheets.

Refer to Schedule B for FFE Performance specification

Refer to Schedule C for Modular Shower Room Details

Drawings to be read in conjunction with approved Planning drawings & conditions.

D&M contractor to give consideration to the co-ordination of the apartment layouts in regards to building structure.

Preferred locations of items such as power outlets, data points & lighting shown. Exact positions and quantities are subject to D&M contractor design to comply with CPS.

D&M contractor to allow for all required services to kitchen appliances, i.e. power, water & drainage. Details not shown on layouts.

Thickness of separating walls between rooms indicative only, subject to D&M contractor design to suit fire & acoustic requirements. Note: statutory minimum room sizes must be maintained where deviations are made.

See CPS Schedule E M&E performance specification

Refer to Schedule of Internal Doors W-70-201 for further detail of internal doors.

Refer to Schedule of External Windows W-70-101 for further detail of external windows.

Refer to Schedule of Curtain Walling Drawing No. W-70-102 for further detail of curtain walling.

Refer to Internal Partition Type Plans drawings nos. W-20-401, W-20-402, W-20-403, W-20-404, W-20-405, W-20-406, W-20-407, W-20-408 & W-20-409 for further detail of internal screens.

Refer to Schedule of Internal Screens Drawing No. W-70-202, W-70-203, W-70-204, W-70-205 for further detail of internal screens.

Refer to Schedule of Kitchen Layouts W-70-301 for details of kitchen joinery & equipment.

Please refer to Fire Safety Certificate application report & drawings for details of Part M compliance.

Refer to Acoustic Report for specifications of acoustic performance.

Please refer to Disabled Access Certificate application report & drawings for details of Part M compliance.

Refer to Staircase Layouts W-70-405, W-70-406 & W-70-407 for further detail of staircases.

Note: mirrors, tvs and tv brackets are not to be provided by contractor. Grounding for tv to be provided.

DIAMOND PARK

GLOUCESTER PLACE

THE LOURDES PARISH SCHOOL

LOWER GROUND FLOOR PLAN Scale 1:50

JOHN FLEMING ARCHITECTS

103 LEESON STREET UPPER, DUBLIN 4

T: (01) 6688888 E: info@jfa.ie W: www.jfa.ie

CLIENT GLOBAL STUDENT ACCOMMODATION

PROJECT STUDENT RESIDENCE

AT GLOUCESTER PLACE, DUBLIN 4

DRAWING LOWER GROUND FLOOR PLAN

SCALE 1:50

JOB NO. 1775

DRAWN BY Author

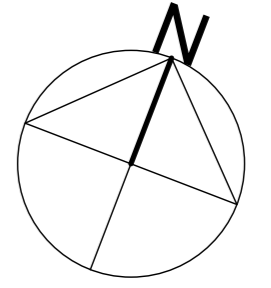
DATE 28/01/2019 14:54:27

DRAWING NUMBER W-20-L00

REVISION 2

DRAWING LOCATION

DRAWING STATUS Construction



KAVANAGH COURT  
STUDENT RESIDENCE

DIAMOND PARK

GLOUCESTER PLACE

THE LOURDES PARISH  
SCHOOL

1 Ground Floor Plan  
1:50

GENERAL NOTES

1. COPYRIGHT RESERVED
2. SHOWN SCALE DRAWING: USE FINISHED DIMENSIONS ONLY
3. ALL DIMENSIONS TO BE REPORTED TO ARCHITECT
4. THE CONTRACTOR IS RESPONSIBLE FOR CHECKING ALL LEVELS AND DIMENSIONS
5. ALL STRUCTURE TO BE TO STRUCTURAL ENGINEERS DETAILS
6. ALL MECH & ELEC SERVICES TO SERVICES ENGINEERS DETAILS
7. ALL PROJECTS FROM THIS DATE TO BE INSTALLED IN ACCORDANCE WITH MANUFACTURERS INSTRUCTIONS
8. CONTRACTOR IS RESPONSIBLE FOR THE COORDINATION OF STRUCTURE, MECHANICAL & SERVICES

REV	DATE	DESCRIPTION	BY
1	08/01/19		RB
2	28/01/19	Studio Kitchens updated, desks reduce to 1100mm, shoe holders removed	RB

LEGEND

- SSL +0.000 Structural Slab Level
- FFL +0.000 Finished Floor Level
- Fall Arrest System
- 1400x900mm Wheelchair Refuge with associated refuge panel & alarm
- Designated Clear Space to be clear of all door swings & fittings
- 1800x1800mm Turning Circle to be clear of all door swings & fittings
- Radon Sump & exhaust vent
- External Window Reference Refer to W-70-101 for details
- External Curtain Wall Reference Refer to W-70-101 for details
- External Door Reference Refer to W-70-101 for details
- Internal Door Reference Refer to W-70-101 for details
- Internal Screen Reference Refer to W-70-101 for details
- Flooring: IVC Design Floor Click System
- Flooring: Terrazzo Ceramic by Ardagna 600 x 600mm matt finish to achieve R10 Slip Resistance Value

Drawings to be read in conjunction with the Clients Performance Specification (CPS) including Schedule A Room Data Sheets. Refer to Schedule B for FF&E Performance specification. Refer to Schedule J for Acoustic Performance. Refer to Schedule L for Modular Shower Room Details. Refer to Schedule M for Acoustic Performance. Drawings to be read in conjunction with approved Planning drawings & conditions. D&B contractor to give consideration to the co-ordination of the apartment layouts in regards to building structure. Preferred locations of items such as power outlets, data points & lighting shown. Exact positions and quantities are subject to D&B contractor design to comply with CPS. D&B contractor to allow for all required services to kitchen appliances, i.e. power, water & drainage. Details not shown on layouts. Thickness of separating walls between rooms indicative only, subject to D&B contractor design to suit fire & acoustic requirements. Note: statutory minimum room sizes must be maintained where deviations are made. See CPS Schedule E M&E performance specification. Refer to Schedule of Internal Doors W-70-201 for further detail of internal doors. Refer to Schedule of External Windows W-70-101 for further detail of external windows. Refer to Schedule of Curtain Walling Drawing No. W-70-102 for further detail of curtain walling. Refer to Internal Partition Type Plans drawings no. W-20-401, W-20-401, W-20-101, W-20-201, W-20-301, W-20-401 & W-20-501 & Internal Partitions Detail sheets W-60-700 & W-60-701. Refer to Schedule of Internal Screens Drawing No. W-70-202, W-70-203, W-70-204, W-70-205 for further detail of internal screens. Please refer to Kitchen Layouts W-70-301 for details of kitchen zones & equipment. Please refer to Fire Safety Certificate application report & drawings for details of Part B compliance. Please refer to Acoustic Report for specifications of acoustic performance. Please refer to Disabled Access Certificate application report & drawings for details of Part M compliance. Refer to Staircase Layouts W-70-405, W-70-406 & W-70-407 for further detail of staircases. Note: mimsers, lvs and brackets are not to be provided by contractor. Grounding to be provided.



**JOHN FLEMING ARCHITECTS**  
103 LEESON STREET UPPER, DUBLIN 4.  
T: (01) 6688888 E: info@jfa.ie W: www.jfa.ie

CLIENT  
GLOBAL STUDENT ACCOMMODATION

PROJECT  
STUDENT RESIDENCE  
AT GLOUCESTER PLACE, DUBLIN 4.

DRAWING  
GROUND FLOOR PLAN

SCALE 1:50 JOB NO. 1775

DRAWN BY: Author DATE: 28/01/2019 14:51:14

DRAWING NUMBER: W-20-000 REVISION: 2

DRAWING STATUS: Construction

KAVANAGH COURT  
STUDENT RESIDENCE

DIAMOND PARK

GLOUCESTER PLACE

THE LOURDES PARISH  
SCHOOL

GENERAL NOTES

1. COPYRIGHT RESERVED
2. SHOWN SCALE DRAWING USE FINISHED DIMENSIONS ONLY
3. ALL DIMENSIONS TO BE REPORTED TO ARCHITECT
4. THE CONTRACTOR IS RESPONSIBLE FOR CHECKING ALL LEVELS AND DIMENSIONS
5. ALL STRUCTURE TO BE TO STRUCTURAL ENGINEERS DETAILS
6. ALL MECH & ELEC SERVICES TO SERVICES ENGINEERS DETAILS
7. ALL PROJECTS FROM THIS TO BE INSTALLED IN ACCORDANCE WITH MANUFACTURERS INSTRUCTIONS
8. CONTRACTOR IS RESPONSIBLE FOR THE COORDINATION OF STRUCTURE, MECHANICAL & ELECTRICAL SERVICES

REV	DATE	DESCRIPTION	BY
1	28/01/19		RB
2	28/01/19	Studio Kitchens updated, desks reduce to 1100mm, shoe holders removed	RB

LEGEND

- SSL +0.000 Structural Slab Level
- FFL +0.000 Finished Floor Level
- Fall Arrest System
- 1400x900mm Wheelchair Refuge with associated refuge panel & alarm
- Designated Clear Space to be clear of all door swings & fittings
- 1800x1800mm Turning Circle to be clear of all door swings & fittings
- Radon Sump & exhaust vent
- (WT.01) External Window Reference Refer to W-70-101 for details
- (CW.01) External Curtain Wall Reference Refer to W-70-101 for details
- (ED.01) External Door Reference Refer to W-70-101 for details
- (ID.01) Internal Door Reference Refer to W-70-101 for details
- (SC.01) Internal Screen Reference Refer to W-70-101 for details
- Flooring: IVC Design Floor Click System
- Flooring: Terrazzo Ceramic by Archigres 600 x 600mm matt finish to achieve R10 Slip Resistance Value

Drawings to be read in conjunction with the Client's Performance Specification (CPS) for FF&E Performance Schedule A Room Data Sheets.  
Refer to Schedule B for FF&E Performance specification  
Refer to Schedule D for Modular Shower Room Details  
Refer to Schedule J for Acoustic Performance  
Drawings to be read in conjunction with approved Planning drawings & conditions.  
D&B contractor to give consideration to the co-ordination of the apartment layouts in regards to building structure.  
Preferred locations of items such as power outlets, data points & lighting shown. Exact positions and quantities are subject to D&B contractor design to comply with CPS.  
D&B contractor to allow for all required services to kitchen appliances, i.e. power, water & drainage. Details not shown on layouts.  
Thickness of separating walls between rooms indicative only, subject to D&B contractor design to suit fire & acoustic requirements. Note: statutory minimum room sizes must be maintained where deviations are made.  
See CPS Schedule E M&E performance specification  
Refer to Schedule of Internal Doors W-70-201 for further detail of internal doors.  
Refer to Schedule of External Windows W-70-101 for further detail of external windows.  
Refer to Schedule of Curtain Walling Drawing No. W-70-102 for further detail of curtain walling.  
Refer to Internal Partition Type Plans drawings no. W-20-401, W-20-401, W-20-101, W-20-201, W-20-301, W-20-401 & W-20-501 & Internal Partitions Detail sheets W-60-700 & W-60-701.  
Refer to Schedule of Internal Screens Drawing No. W-70-202, W-70-203, W-70-204, W-70-205 for further detail of internal screens.  
Refer to Schedule of Kitchen Layouts W-70-301 for details of kitchen screens & equipment.  
Please refer to Fire Safety Certificate application report & drawings for details of Part B compliance.  
Refer to Acoustic Report for specifications of acoustic performance.  
Please refer to Disabled Access Certificate application report & drawings for details of Part M compliance.  
Refer to Staircase Layouts W-70-405, W-70-406 & W-70-407 for further detail of staircases.  
Note: mirrors, tvs and brackets are not to be provided by contractor. Groundings to be provided.



**JOHN FLEMING  
ARCHITECTS**  
103 LEESON STREET UPPER, DUBLIN 4.  
T: (01) 6688888 E: info@jfa.ie W: www.jfa.ie

CLIENT: GLOBAL STUDENT ACCOMMODATION

PROJECT: STUDENT RESIDENCE  
AT GLOUCESTER PLACE, DUBLIN 4.

DRAWING: FIRST FLOOR PLAN

SCALE	JOB NO.
1 : 50	1775

DRAWN BY	REVISION
RB	

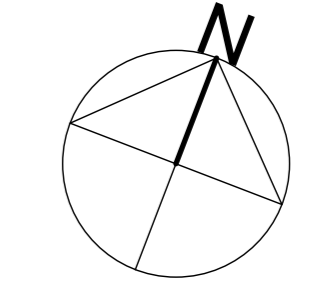
DATE	REVISION
28/01/2019 14.51:47	

DRAWING NUMBER	REVISION
W-20-100	2

DRAWING LOCATION: C:\Users\jfa\Documents\2019\1775\1775\_100\_01.dwg

DRAWING STATUS: Construction

1 FIRST FLOOR PLAN  
Scale 1:50



KAVANAGH COURT  
STUDENT RESIDENCE

DIAMOND PARK

GLOUCESTER PLACE

THE LOURDES PARISH  
SCHOOL

SECOND FLOOR PLAN  
Scale 1:50

GENERAL NOTES

1. COPYRIGHT RESERVED
2. SHOWN SCALE DRAWING USE FINISHED DIMENSIONS ONLY
3. ALL DISCREPANCIES TO BE REPORTED TO ARCHITECT
4. THE CONTRACTOR IS RESPONSIBLE FOR CHECKING ALL LEVELS AND DIMENSIONS
5. ALL STRUCTURE TO BE TO STRUCTURAL ENGINEERS DETAILS
6. ALL MECH & ELEC SERVICES TO SERVICES ENGINEERS DETAILS
7. ALL PROJECTS MUST BE INSTALLED IN ACCORDANCE WITH MANUFACTURERS INSTRUCTIONS
8. CONTRACTOR IS RESPONSIBLE FOR THE COORDINATION OF STRUCTURE, MECHANICAL & ELECTRICAL SERVICES

REV	DATE	DESCRIPTION	BY
1	09/01/19		RB
2	28/01/19	Studio Kitchens updated, desks reduce to 1100mm, shoe holders removed	RB

LEGEND

- SSL +0.000 Structural Slab Level
- FFL +0.000 Finished Floor Level
- Fall Arrest System
- 1400x900mm Wheelchair Refuge with associated refuge panel & alarm
- Designated Clear Space to be clear of all door swings & fittings
- 1800x1800mm Turning Circle to be clear of all door swings & fittings
- Radon Sump & exhaust vent
- External Window Reference Refer to W-70-101 for details
- External Curtain Wall Reference Refer to W-70-101 for details
- External Door Reference Refer to W-70-101 for details
- Internal Door Reference Refer to W-70-101 for details
- Internal Screen Reference Refer to W-70-101 for details
- Flooring: IV/C Design Floor Click System
- Flooring: Terrazzo Ceramiche by Archigres 600 x 600mm matt finish to achieve R10 Slip Resistance Value

Drawings to be read in conjunction with the Clients Performance Specification (CPS) including Schedule A Room Data Sheets.

Refer to Schedule B for FF&E Performance specification

Refer to Schedule J for Modular Shower Room Details

Refer to Schedule J for Acoustic Performance

Drawings to be read in conjunction with approved Planning drawings & conditions

D&B contractor to give consideration to the co-ordination of the apartment layouts in regards to building structure.

D&B contractor to allow for all required services to kitchen appliances, i.e. power, water & drainage. Details not shown on layouts.

Thickness of separating walls between rooms indicative only, subject to D&B contractor design to suit fire & acoustic requirements. Note: statutory minimum room sizes must be maintained where deviations are made.

See CPS Schedule E M&E performance specification

Refer to Schedule of Internal Doors W-70-201 for further detail of internal doors.

Refer to Schedule of External Windows W-70-101 for further detail of external windows.

Refer to Schedule of Curtain Walling Drawing No. W-70-102 for further detail of curtain walling.

Refer to Internal Partition Type Plans drawings no. W-20-001, W-20-001, W-20-001, W-20-001, W-20-001, W-20-001 & W-20-001 & Internal Partitions Detail Sheets W-60-700 & W-60-701.

Refer to Schedule of Internal Screens Drawing No. W-70-202, W-70-203, W-70-204, W-70-205 for further detail of internal screens.

Refer to Schedule of Kitchen Layouts W-70-301 for details of kitchen zones & equipment.

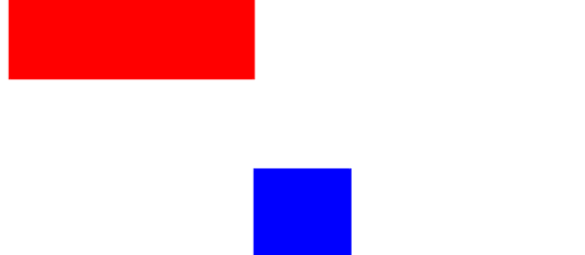
Please refer to Fire Safety Certificate application report & drawings for details of Part B compliance.

Refer to Acoustic Report for specifications of acoustic performance.

Please refer to Disabled Access Certificate application report & drawings for details of Part M compliance.

Refer to Staircase Layouts W-70-405, W-70-406 & W-70-407 for further detail of staircases.

Note: mims, lvs and brackets are not to be provided by contractor. Grounding to be provided.



**JOHN FLEMING  
ARCHITECTS**  
103 LEESON STREET UPPER, DUBLIN 4, T. (01) 6689888 E. info@jfa.ie W. www.jfa.ie

CLIENT  
GLOBAL STUDENT ACCOMMODATION

PROJECT  
STUDENT RESIDENCE  
AT GLOUCESTER PLACE, DUBLIN 4.

DRAWING  
SECOND FLOOR PLAN

SCALE	JOB NO.
1:50	1775

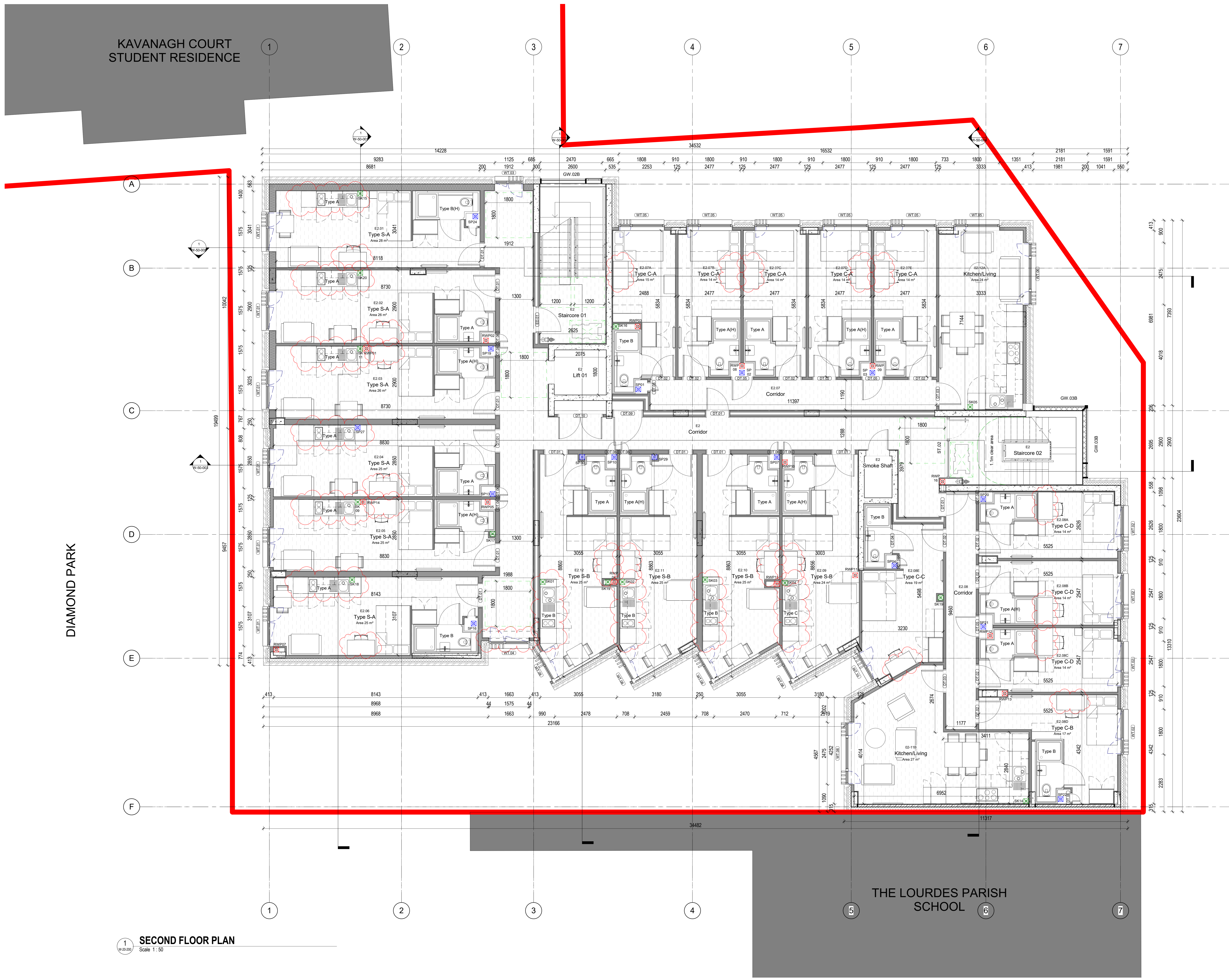
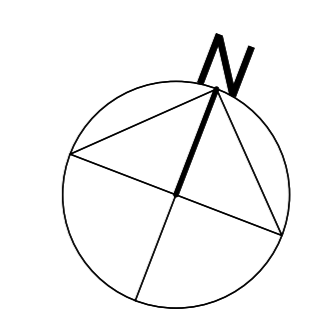
DRAWN BY	TON

DATE	REVISION
28/01/2019 14:52:21	

DRAWING NUMBER	REVISION
W-20-200	2

DRAWING LOCATION  
C:\Users\jfl\Documents\200001\W-20-200\W-20-200.dwg

DRAWING STATUS  
Construction



KAVANAGH COURT  
STUDENT RESIDENCE

DIAMOND PARK

GLOUCESTER PLACE

THE LOURDES PARISH  
SCHOOL

- GENERAL NOTES
1. COPYRIGHT RESERVED
  2. SHOWN SCALE DRAWING. USE FINISHED DIMENSIONS ONLY
  3. ALL DIMENSIONS TO BE REPORTED TO ARCHITECT
  4. THE CONTRACTOR IS RESPONSIBLE FOR CHECKING ALL LEVELS AND DIMENSIONS
  5. ALL STRUCTURE TO BE TO STRUCTURAL ENGINEERS DETAILS
  6. ALL MECH & ELEC SERVICES TO SERVICES ENGINEERS DETAILS
  7. ALL PROJECTS MUST BE INSTALLED IN ACCORDANCE WITH MANUFACTURER'S INSTRUCTIONS
  8. CONTRACTOR IS RESPONSIBLE FOR THE COORDINATION OF STRUCTURE, MECH & ELEC SERVICES

REV	DATE	DESCRIPTION	BY
1	28/01/19		RB
2	28/01/19	Studio Kitchens updated, desks reduce to 1100mm, shoe holders removed	RB

- LEGEND
- SSL +0.000 Structural Slab Level
  - FFL +0.000 Finished Floor Level
  - Fall Arrest System
  - 1400x900mm Wheelchair Refuge with associated refuge panel & alarm
  - Designated Clear Space to be clear of all door swings & fittings
  - 1800x1800mm Turning Circle to be clear of all door swings & fittings
  - Radon Sump & exhaust vent
  - External Window Reference Refer to W-70-101 for details
  - External Curtain Wall Reference Refer to W-70-101 for details
  - External Door Reference Refer to W-70-101 for details
  - Internal Door Reference Refer to W-70-101 for details
  - Internal Screen Reference Refer to W-70-101 for details
  - Flooring: IVC Design Floor Click System
  - Flooring: Terrazzo Ceramic tile by Ardagna 600 x 600mm matt finish to achieve R10 Slip Resistance Value

- Drawings to be read in conjunction with the Client's Performance Specification (CPS) including Schedule A Room Data Sheets. Refer to Schedule B for FRAE Performance specification. Refer to Schedule D for Modular Shower Room Details. Refer to Schedule J for Acoustic Performance. Drawings to be read in conjunction with approved Planning drawings & conditions. D&B contractor to give consideration to the co-ordination of the apartment layouts in regards to building structure. D&B contractor to allow for all required services to kitchen appliances, i.e. power, water & drainage. Details not shown on layouts. Thickness of separating walls between rooms indicative only, subject to D&B contractor design to suit fire & acoustic requirements. Note: statutory minimum room sizes must be maintained where deviations are made. See CPS Schedule E M&E performance specification. Refer to Schedule of Internal Doors W-70-201 for further detail of internal doors. Refer to Schedule of External Windows W-70-101 for further detail of external windows. Refer to Schedule of Curtain Walling Drawing No. W-70-102 for further detail of curtain walling. Refer to Internal Partition Type Plans drawings no. W-20-401, W-20-401, W-20-101, W-20-201, W-20-301, W-20-401 & W-20-501 & Internal Partitions Detail sheets W-60-700 & W-60-701. Refer to Schedule of Internal Screens Drawing No. W-70-202, W-70-203, W-70-204, W-70-205 for further detail of internal screens. Please refer to Kitchen Layouts W-70-301 for details of kitchen zones & equipment. Please refer to Fire Safety Certificate application report & drawings for details of Part B compliance. Please refer to Acoustic Report for specifications of acoustic performance. Please refer to Disabled Access Certificate application report & drawings for details of Part M compliance. Refer to Staircase Layouts W-70-405, W-70-406 & W-70-407 for further detail of staircases.

Note: millimeters. In's and brackets are not to be provided by contractor. Grounding to be provided.

**JOHN FLEMING ARCHITECTS**  
103 LEESON STREET UPPER, DUBLIN 4, T: (01) 6689888 E: info@jfa.ie W: www.jfa.ie

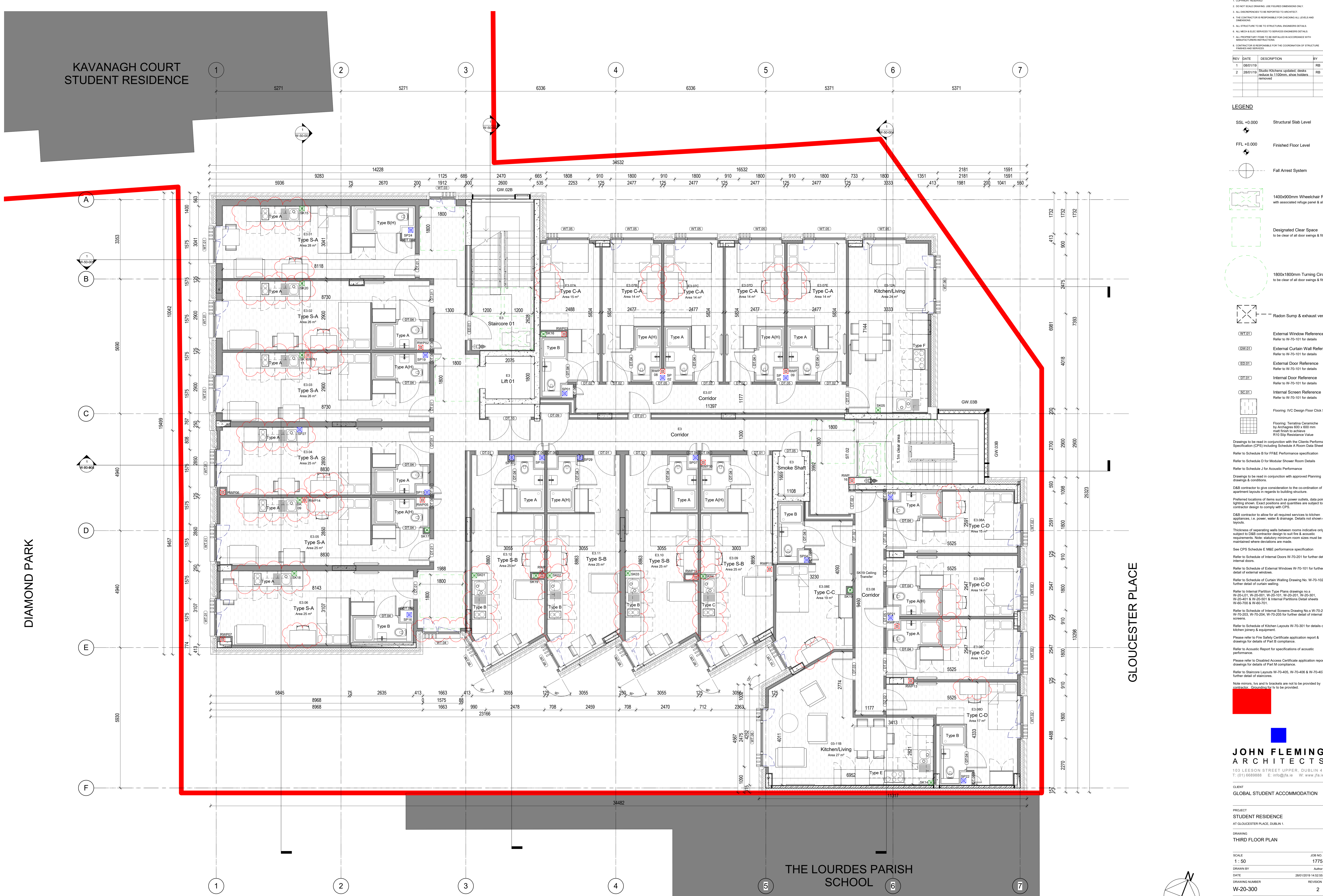
CLIENT  
GLOBAL STUDENT ACCOMMODATION

PROJECT  
STUDENT RESIDENCE  
AT GLOUCESTER PLACE, DUBLIN 4.

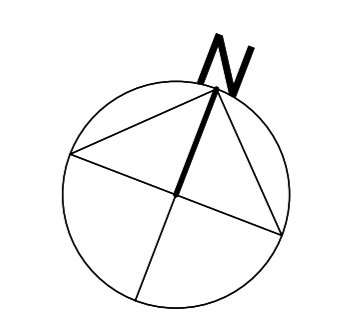
DRAWING  
THIRD FLOOR PLAN

SCALE	JOB NO.
1 : 50	1775
DRAWN BY	Author
DATE	28/01/2019 14:52:55
DRAWING NUMBER	REVISION
W-20-300	2

DRAWING LOCATION  
DRAWING STATUS  
Construction



1 THIRD FLOOR PLAN  
Scale 1:50



KAVANAGH COURT  
STUDENT RESIDENCE

DIAMOND PARK

GLOUCESTER PLACE

THE LOURDES PARISH  
SCHOOL

**FOURTH FLOOR PLAN**  
Scale 1:50

- GENERAL NOTES
1. COPYRIGHT RESERVED
  2. SHOWN SCALE DRAWING: USE FINISHED DIMENSIONS ONLY
  3. ALL DIMENSIONS TO BE REPORTED TO ARCHITECT
  4. THE CONTRACTOR IS RESPONSIBLE FOR CHECKING ALL LEVELS AND DIMENSIONS
  5. ALL STRUCTURE TO BE TO STRUCTURAL ENGINEERS DETAILS
  6. ALL MECH & ELEC SERVICES TO SERVICES ENGINEERS DETAILS
  7. ALL PROJECTS FROM THIS TO BE INSTALLED IN ACCORDANCE WITH MANUFACTURER'S INSTRUCTIONS
  8. CONTRACTOR IS RESPONSIBLE FOR THE COORDINATION OF STRUCTURE, MECHANICAL & ELECTRICAL SERVICES

REV	DATE	DESCRIPTION	BY
1	08/01/19		RB
2	28/01/19	Studio Kitchens updated, desks reduce to 1100mm, shoe holders removed	RB

LEGEND

- SSL +0.000 Structural Slab Level
- FFL +0.000 Finished Floor Level
- Fall Arrest System
- 1400x600mm Wheelchair Refuge with associated refuge panel & alarm
- Designated Clear Space to be clear of all door swings & fittings
- 1800x1800mm Turning Circle to be clear of all door swings & fittings
- Radon Sump & exhaust vent
- External Window Reference Refer to W-70-101 for details
- External Curtain Wall Reference Refer to W-70-101 for details
- External Door Reference Refer to W-70-101 for details
- Internal Door Reference Refer to W-70-101 for details
- Internal Screen Reference Refer to W-70-101 for details
- Flooring: IVC Design Floor Click System
- Flooring: Terrazzo Ceramic tile by Archigres 600x600 mm must finish to achieve R10 Slip Resistance Value

- Drawings to be read in conjunction with the Client's Performance Specification (CPS) including Schedule A Room Data Sheets. Refer to Schedule B for FF&E Performance specification. Refer to Schedule D for Modular Shower Room Details. Refer to Schedule J for Acoustic Performance. Drawings to be read in conjunction with approved Planning drawings & conditions. DBB contractor to give consideration to the co-ordination of the apartment layouts in regards to building structure. Preferred locations of items such as power outlets, data points & lighting shown. Exact positions and quantities are subject to DBB contractor design to comply with CPS. DBB contractor to allow for all required services to kitchen appliances, i.e. power, water & drainage. Details not shown on layouts. Thickness of separating walls between rooms indicative only, subject to DBB contractor design to suit fire & acoustic requirements. Note: statutory minimum room sizes must be maintained where deviations are made. See CPS Schedule E M&E performance specification. Refer to Schedule of Internal Doors W-70-201 for further detail of internal doors. Refer to Schedule of External Windows W-70-101 for further detail of external windows. Refer to Schedule of Curtain Walling Drawing No. W-70-102 for further detail of curtain walling. Refer to Internal Partition Type Plans drawings no. W-20-401, W-20-401, W-20-101, W-20-201, W-20-301, W-20-402 & W-20-501 & Internal Partitions Detail sheets W-60-700 & W-60-701. Refer to Schedule of Internal Screens Drawing No. W-70-202, W-70-203, W-70-204, W-70-205 for further detail of internal screens. Refer to Schedule of Kitchen Layouts W-70-301 for details of kitchen layout & equipment. Please refer to Fire Safety Certificate application report & drawings for details of Part B compliance. Refer to Acoustic Report for specifications of acoustic performance. Please refer to Disabled Access Certificate application report & drawings for details of Part M compliance. Refer to Staircase Layouts W-70-405, W-70-406 & W-70-407 for further detail of staircases. Note: mirrors, bars and brackets are not to be provided by contractor. Groundwork to be provided.



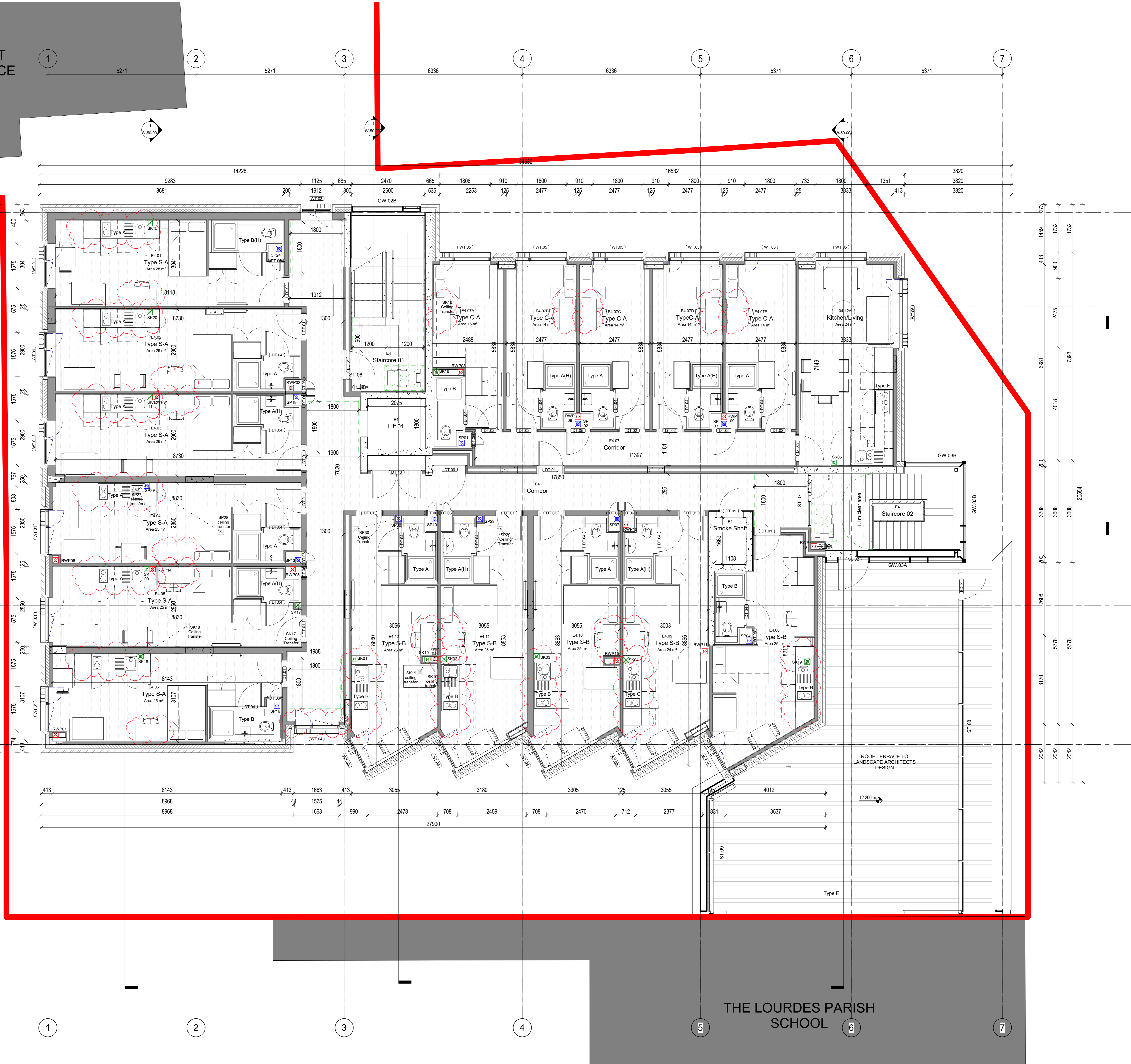
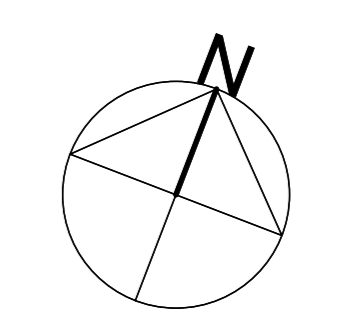
**JOHN FLEMING ARCHITECTS**  
103 LEESON STREET UPPER, DUBLIN 4.  
T: (01) 6689888 E: info@jfa.ie W: www.jfa.ie

CLIENT  
GLOBAL STUDENT ACCOMMODATION

PROJECT  
STUDENT RESIDENCE  
AT GLOUCESTER PLACE, DUBLIN 4.

DRAWING  
FOURTH FLOOR PLAN

SCALE	JOB NO.
1:50	1775
DRAWN BY	AUTHOR
DATE	REVISION
28/01/2019 14.53.27	
DRAWING NUMBER	REVISION
W-20-400	2
DRAWING LOCATION	
DRAWING STATUS	Construction



KAVANAGH COURT  
STUDENT RESIDENCE

DIAMOND PARK

GLOUCESTER PLACE

THE LOURDES PARISH  
SCHOOL

Roof Terrace  
below

GENERAL NOTES

1. COPYRIGHT RESERVED
2. SHOWN SCALE DRAWING. USE FINISHED DIMENSIONS ONLY
3. ALL DIMENSIONS TO BE REPORTED TO ARCHITECT
4. THE CONTRACTOR IS RESPONSIBLE FOR CHECKING ALL LEVELS AND DIMENSIONS
5. ALL STRUCTURE TO BE TO STRUCTURAL ENGINEERS DETAILS
6. ALL MECH & ELEC SERVICES TO BE TO SERVICES ENGINEERS DETAILS
7. ALL PROJECTS MUST BE TO BE INSTALLED IN ACCORDANCE WITH MANUFACTURERS INSTRUCTIONS
8. CONTRACTOR IS RESPONSIBLE FOR THE COORDINATION OF STRUCTURE, MECHANICAL & ELECTRICAL SERVICES

REV	DATE	DESCRIPTION	BY
1	09/01/19		RB
2	28/01/19	Studio Kitchens updated, desks reduce to 1100mm, shoe holders removed	RB

- LEGEND**
- SSL +0.000 Structural Slab Level
  - FFL +0.000 Finished Floor Level
  - Fall Arrest System
  - 1400x900mm Wheelchair Refuge with associated refuge panel & alarm
  - Designated Clear Space to be clear of all door swings & fittings
  - 1800x1800mm Turning Circle to be clear of all door swings & fittings
  - Radon Sump & exhaust vent
  - External Window Reference Refer to W-70-101 for details
  - External Curtain Wall Reference Refer to W-70-101 for details
  - External Door Reference Refer to W-70-101 for details
  - Internal Door Reference Refer to W-70-101 for details
  - Internal Screen Reference Refer to W-70-101 for details
  - Flooring: IV/C Design Floor Click System
  - Flooring: Terazzo Ceramiche by Archigres 600 x 600mm matt finish to achieve R10 Slip Resistance Value

Drawings to be read in conjunction with the Client's Performance Specification (CPS) including Schedule A Room Data Sheets.

Refer to Schedule B for FFE Performance specification

Refer to Schedule D for Modular Shower Room Details

Refer to Schedule J for Acoustic Performance

Drawings to be read in conjunction with approved Planning drawings & conditions

D&B contractor to give consideration to the co-ordination of the apartment layouts in regards to building structure.

Preferred locations of items such as power outlets, data points & lighting shown. Exact positions and quantities are subject to D&B contractor design to comply with CPS.

D&B contractor to allow for all required services to kitchen appliances, i.e. power, water & drainage. Details not shown on layouts.

Thickness of separating walls between rooms indicative only, subject to D&B contractor design to suit fire & acoustic requirements. Note: statutory minimum room sizes must be maintained where deviations are made.

See CPS Schedule E M&E performance specification

Refer to Schedule of Internal Doors W-70-201 for further detail of internal doors

Refer to Schedule of External Windows W-70-101 for further detail of external windows

Refer to Schedule of Curtain Walling Drawing No. W-70-102 for further detail of curtain walling

Refer to Internal Partition Type Plans drawings no. W-20-401, W-20-401, W-20-101, W-20-201, W-20-301, W-20-401 & W-20-501 & Internal Partitions Detail Sheets W-60-700 & W-60-701

Refer to Schedule of Internal Screens Drawing No. W-70-202, W-70-203, W-70-204, W-70-205 for further detail of internal screens

Refer to Schedule of Kitchen Layouts W-70-301 for details of kitchen items & equipment

Please refer to Fire Safety Certificate application report & drawings for details of Part B compliance.

Refer to Acoustic Report for specifications of acoustic performance.

Please refer to Disabled Access Certificate application report & drawings for details of Part M compliance.

Refer to Staircase Layouts W-70-405, W-70-406 & W-70-407 for further detail of staircases

Note: mirrors, tvs and brackets are not to be provided by contractor. Grounding to be provided.

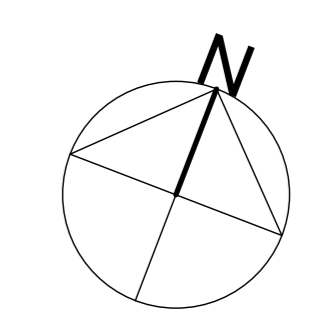
**JOHN FLEMING  
ARCHITECTS**  
103 LEESON STREET UPPER, DUBLIN 4  
T: (01) 6689888 E: info@jfa.ie W: www.jfa.ie

CLIENT  
GLOBAL STUDENT ACCOMMODATION

PROJECT  
STUDENT RESIDENCE  
AT GLOUCESTER PLACE, DUBLIN 4

DRAWING  
FIFTH FLOOR PLAN

SCALE	JOB NO.
1 : 50	1775
DRAWN BY	Author
DATE	28/01/2019 14:53:57
DRAWING NUMBER	REVISION
W-20-500	2
DRAWING LOCATION	
DRAWING STATUS	Construction



**FIFTH FLOOR PLAN**  
Scale 1:50

